

prepFAST PPQ

Ultraclean automated sample introduction with inline concentration of ultrapure chemicals for parts-per-quadrillion (ppq) level analysis



prepFAST PPQ Direct Analysis Mode

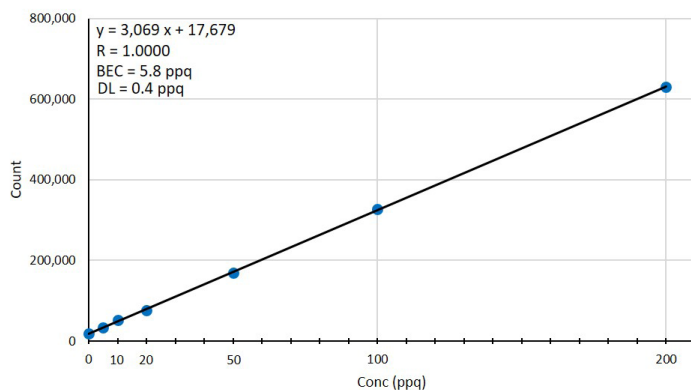
- General purpose for any sample matrix
- Sub-PPT detection limits
- Automated MSA calibration
- Automated inline dilution

prepFAST PPQ Concentration Mode

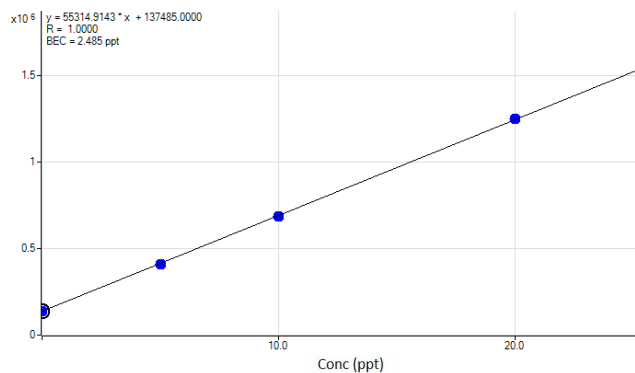
- Suitable for UPW, 30% H₂O₂, and IPA
- Sub-PPQ detection limits
- Removes difficult matrices such as IPA while recovering metals
- Removes impact of ICPMS interferences and backgrounds on results
- Amplified sensitivity compared to direct analysis
- Automated MSA calibration

prepFAST PPQ Autocalibrations

39 -> 39 K



28 -> 44 Si



Calibration curve for K at 5, 10, 20, 50, 100, 200 PPQ in UPW (1000x concentration factor).

Calibration curve for Si at 5, 10, 20 PPT in UPW (1000x concentration factor).

Elements	DL (ppq)	Elements	DL (ppq)
Li	0.02	Fe	0.3
B	9	Co	0.01
Na	0.6	Ni	0.07
Mg	0.2	Cu	0.07
Al	0.6	Zn	0.4
Si	240	Mo	0.3
K	0.4	Ag	0.05
Ca	0.3	Cd	0.06
Ti	0.2	Ba	0.04
Cr	0.4	W	0.4
Mn	0.07	Pb	0.05

